

**The
Daffodil and Hosta Society
Of Western Pennsylvania**

Presents

The
2017 DAFFODIL SHOW
of Greater Pittsburgh and Western Pennsylvania

Saturday, April 29, 2017 10:30 A.M. - 3:00 P.M.

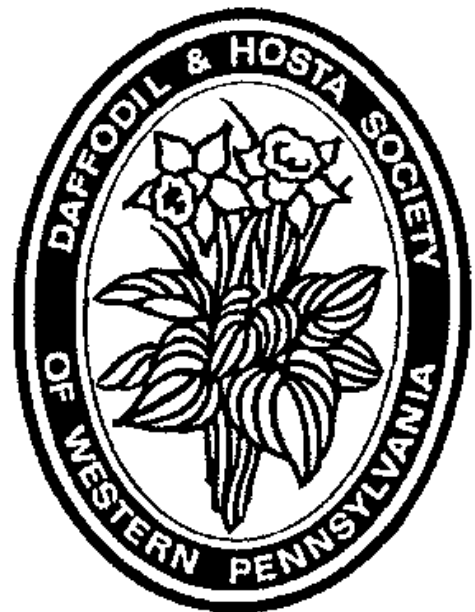
Sponsored by The
Daffodil and Hosta Society of Western Pennsylvania

Located at
Shady Side Academy
Senior School Ice Rink
423 Fox Chapel Road
Pittsburgh, PA 15238

*This show is free
and open to the public.*

Approved by the
American Daffodil Society, Inc.

Presented in conjunction with
the Penn State Extension
of Allegheny County
Garden Marketplace and
Landscape Symposium
of Western PA and
Shady Side Academy



2017 Pittsburgh Daffodil Show Show Committee

Show Chairman.	Stephen Plato
Show Co-Chairman.	Bonnie Plato
Judges Chairman.	Stephen Plato, Mark Gresh
Clerks and Records.	Bonnie Plato
Classification and Placement.	All judges assisting: Mark Gresh, Len Lehman, Matt Wilson, Lorraine Duffola, Trish Abrams
Setup/Breakdown.	Gary Gahagan, Jack Geyser, Bob Dietz, David Arnheim, Megan Danik, Matt Wilson, Stephen Plato, Ron and Dot Sims
Schedule	Bonnie Plato
Yew	Len Lehman
Communication and Publicity.	C. Alicia Perez, Megan Danik, Bonnie Plato
Hospitality	Bernie and Dan Taylor
ADS Awards & Club Awards.	Len Lehman
Membership Table.	Dan Taylor, Gary and Susan Gahagan Bobbi Diller, Jim and Sandy Ellenberger
Staging and Properties.	Stephen and Bonnie Plato Bobbi Diller, David Arnheim
Awards Table Assembly.	David Arnheim, Megan Danik, Dan Taylor
Show Report.	Len Lehman, Trish Abrams, Matt Wilson
Photography.	Gary and Susan Gahagan
Special Judges Gifts.	Alan Peacock

SHADY SIDE ACADEMY SENIOR SCHOOL

Please refer to www.mapquest.com for directions or use GPS

Show is free and open to the public

Saturday, April 29, 2017 10:30 A.M. to 3:00 P.M.

Show Events

Friday April 28, 2017

4:00 P.M. Show set up
*4:00 P.M. – 10:00 P.M. -- Grooming and
entries accepted

Saturday, April 29, 2017

6:00 A.M. – 7:45 A.M. – Entries accepted
8:00 A.M. - 10:30 A.M. – Judging

Show opens to public at conclusion of judging about 10:30 a.m. until 3:00 p.m.

*Because of limited amount of time Saturday morning (6 - 7:45 A.M.), **exhibitors are strongly encouraged** to groom and enter blooms on Friday (4 - 10 P.M.), or **stage blooms at home prior to show** so entries can simply be classified on Friday or Saturday.

The Show Chairman is the final arbiter of all disputes.

GENERAL RULES

1. Entries may be made from 6:00 a.m. until 7:45 a.m. Saturday, April 29, 2017; all entries must be placed by 7:45 a.m. Grooming and entries may also be made on Friday, April 28, 2017 from 4:00 p.m. to 10:00 p.m. On Saturday, all exhibitors must be off the Floor by 7:45 a.m. **This rule will be strictly enforced.**
2. Entry cards for exhibits will be available at the show and may also be obtained in advance from the show chairman. **Fill in both sections of the card.** Any information on an entry card, including the exhibitor's number, which could compromise the anonymity of the exhibitor must be concealed during judging.
3. Entries and awards may not be removed until 3:00 p.m. Saturday, April 29, 2017.

RULES FOR HORTICULTURAL EXHIBITS

4. All classes are open to anyone who grows daffodils except where specified otherwise.
5. An exhibitor may make as many entries as desired in any class provided each entry is a different cultivar or species or an entirely different collection of cultivars and/or species.
6. All blooms in the Horticultural Division must have been grown in the open by the exhibitor. Miniatures and daffodils grown and shown in their containers may be grown in protected areas.
7. Wedging material and containers for cut flower exhibits will be furnished by the show committee. Except for daffodils grown and shown in their containers, no daffodil foliage is permitted.
8. All collections of five or more stems must be exhibited with each cultivar or species in a separate container and identified with Name, Division, and Color Code.
9. Each cultivar or species must be correctly labeled with Name and Division and Color Code. Originator's name must appear on the label in American bred classes, except seedlings shown by the originator (see #11), identified with Name, Division, and Color Code.
10. Exhibits which are not named or are incorrectly named will not be judged, except in Section N. **Correct classification and labeling shall be the responsibility of the exhibitor.**
11. Blooms of seedlings may be exhibited in all classes for named cultivars. **All seedlings must be identified by a number designation assigned by the originator.** If the exhibitor is not the originator, the name of the originator must be included as part of the identification.
12. No label may be changed, specimen added, removed, altered, or substituted after judging has begun or after an award has been placed.
13. Miniature daffodils may be shown only in classes for miniatures. A miniature daffodil is any cultivar or species on the current ADS Approved List of Miniatures. Also, any named or numbered daffodil which appears graceful, with all its parts proportionately small, may be exhibited in Miniature classes and is eligible for all ADS awards, except that only numbered seedlings shown by the originator are eligible for the ADS Miniature Rose Ribbon. The judges may decline to judge any exhibit containing an unapproved miniature that they consider too large for these classes. See Historic Section Miniatures not now on list.
14. An intermediate daffodil is a standard daffodil in divisions 1, 2, 3, 4, or 11 having a single floret whose diameter is typically between 1.5 and 3 inches (typically greater than 50 mm through 80 mm). Intermediate daffodils may be entered in classes for standard daffodils as well as classes reserved for intermediate daffodils.
15. Each stem in an exhibit of cut flowers receiving an ADS award must score 90 or more on the appropriate ADS Scale of Points.
16. Only one first, one second, and one third award may be given in each class. Honorable mention awards may also be given if merited, but only if first, second, and third have been awarded. First, second, third and honorable mention awards may be withheld by the judges if in their opinion the exhibit is not worthy. If a first place award has been given in a class eligible for an ADS ribbon, the ADS Award may not be withheld.
17. The decision of the judges is final. If an error is discovered in an exhibit after completion of judging, any award placed thereon (ADS, Special, or Award) shall be forfeited by the exhibitor. If an error is discovered before the judging is completed, the class must be re-judged.

AMERICAN DAFFODIL SOCIETY AWARDS

Gold Ribbon: Best standard daffodil in Horticultural Division, excluding Container-Grown Section.

White Ribbon: Best three stems of one standard daffodil or species.

Rose Ribbon: Best standard seedling exhibited by its originator.

Purple Ribbon: Best collection of five stems in the Horticulture Section.

Red-White-Blue Ribbon: Best collection of five different standard cultivars, one stem each, of American Breeding (Class 236).

Maroon Ribbon: Best collection of five different standard cultivars, one stem each, reverse bicolor, any division or divisions (Class 237).

Marie Bozievich Ribbon: Best collection of twelve different cultivars and/or species of standard daffodils from at least four RHS divisions (Class 238).

Throckmorton Ribbon: Best collection of fifteen cultivars and/or species of standard daffodils from fifteen different RHS classifications (Class 239).

Quinn Award: Silver Medal or Ribbon for a collection of twenty-four different cultivars and/or species of standard daffodils from at least five divisions. The medal may be won only once by any exhibitor in all ADS shows where offered. A former winner may exhibit in this class but may receive only the Quinn Ribbon. Open only to ADS members. (Class 240).

Havens Ribbon: Best collection of twelve different cultivars of standard daffodils from at least three divisions from RHS divisions 5 through 10 (Class 241).

Miniature Gold Ribbon: Best miniature daffodil in Horticultural Division, excluding Container-Grown Section.

Miniature White Ribbon: Best three stems of a miniature daffodil.

Miniature Rose Ribbon: Best miniature seedling exhibited by its originator.

Lavender Ribbon: Best collection of five miniature daffodils (Classes 231, 242, 243 and 244).

Miniature Red-White-Blue Ribbon: Best collection of five different miniature cultivars, one stem each of American breeding (Class 244).

Roberta C. Watrous Award: Silver Medal or Ribbon for a collection of twelve different cultivars and/or species of miniature daffodils from at least three divisions. This medal may be won only once by any exhibitor in all ADS shows where offered. A former winner may exhibit in this class but may receive only the Watrous Ribbon. Open only to ADS members (Class 245).

Small Growers Ribbon: Best daffodil, cultivar or species exhibited in the Small Growers Section F by a Small Grower (person growing 50 or fewer cultivars and/or species).

Youth Ribbon: Best standard or miniature daffodil single stem exhibited in the Horticultural Division Section H.

Youth Best of Three Ribbon: Best three stems exhibited from classes 227 or 229.

Youth Collection Ribbon: Best collection of five stems exhibited from classes 230 or 231.

Standard Container-Grown Ribbon: Best standard container-grown named daffodil or seedling exhibit in the Container-Grown Section.

Miniature Container-Grown Ribbon: Best miniature container-grown named daffodil or seedling exhibit in the Container-Grown Section.

Species/Species Hybrid Container-Grown Ribbon: Best species/species hybrid container-grown daffodil exhibit in the Container-Grown Section.

Historic Daffodil Best pre-1940 cultivar in the Historic Section.

Historic Three-stem Ribbon: Best pre-1940 vase of three of one cultivar (Class 253). Species not eligible for this.

Historic Daffodil Collection of Five Ribbon: Best pre-1940 collection of 5 different cultivars (Class 252). Species not eligible for this award.

Intermediate Best intermediate-size cultivar selected from the Intermediate Section (Section G) of the show or from standard collections, or Youth (Section H) or Small Growers Sections (Section F).

Intermediate Three-stem Ribbon: Sets/vases of three stems of an intermediate-size cultivar from Section G are eligible for this ribbon. (Classes 215, 216, 217, 218, 219).

Intermediate Collection of Five: Best collection of 5 different cultivars in the Intermediate Section (G). (Place with standard collections in class 235).

Best Classic Single-Stem Ribbon: Best single stem of a classic standard cultivar in the Classic Section (Section P) (Classes 260 & 261) 1940-1969.

Best Classic Three-stem Ribbon: Best three stems of one classic standard cultivar in the Classic Section (Classes 262 & 263). 1940-1969.

Best Classic Collection of Five Ribbon: Best collection of five different classic standard cultivars from the Classic Section (Class 264).

Best Classic Daffodil Ribbon: Best classic daffodil (Section P) 1940-1969.

Silver Ribbon: Awarded to the exhibitor winning the most First place (blue) ribbons in the Horticultural Division.

Wells Knierim Ribbon: Best photograph in Section Q.

LOCAL AWARDS

These awards given only to blue ribbon entries; sponsored by DHSWP

Sweepstakes Award: Most blue ribbons in the Show.

Club Flower Award: Best daffodil exhibited in Section M.

Standard Single Stem Award: Best entry of one single stem in Sections A, F or in Classes 222-226, 250, 254, or 255.

Best of Show Award: Best daffodil in the show.

Dianne Mrak Award: Best miniature daffodil in the show.

Awards sponsored by local club members and winners recognized at the local awards banquet:

Berma Abercrombie Award: Best intermediate daffodil in the show; sponsored by Jeanne Rowles.

John Yonski Award: Best split-corona in the show; sponsored by Melissa Ceresi.

Dan Tau Award: Best white with a pink cup or pink-rimmed daffodil in the show; sponsored by Dianne Mrak.

Rowles Family Award: Best yellow with a pink cup in the show.

Gary Ball Award: Best white daffodil in the show.

Linda Herhold Award: Best vase of 3 standard stems from Sections B, G or H.

Best Historic Bloom in Show: Sponsored by Joe Hamm.

Best Youth Bloom in Show: Sponsored by Joe Hamm.

New Zealand Award: Best New Zealand bred daffodil; sponsored by Spud Brogden. Entry card marked "N.Z." by exhibitor; Classification should check.

ROYAL HORTICULTURAL SOCIETY SYSTEM OF CLASSIFICATION

The Royal Horticultural Society System of Classification will be used: The Labeling authority is the current version of Daffseek (Daffseek.org) or *Daffodils to Show and Grow* as amended each year in *The Daffodil Journal* December issue. For garden purposes, daffodils are classified in 13 divisions where the division number specifies the form and the letters (color code) specify the colors. For example:

1 W-Y = a trumpet daffodil with white perianth segments (“petals”) and yellow corona (“trumpet”).

2 Y-YYO = a large cupped daffodil, all yellow except for a band of orange at corona (“cup”) rim.

11b W-O/Y/W = a papillon daffodil with white perianth segments and longitudinal bands of orange, yellow and white in the corona, with orange predominant.

Whether of wild or cultivated origin, once a selection has been distinguished by a cultivar name, it should be assigned to Divisions 1-12. Daffodils distinguished solely by botanical name should be assigned to Division 13. The characteristics for Divisions 5 to 10 are given for guidance only; they are not all necessarily expected to be present in every cultivar assigned to those divisions.

A reverse bicolor has a predominantly yellow perianth and a predominantly white cup in at least two (2) adjacent cup zones.

DIVISION 1 - TRUMPET DAFFODIL CULTIVARS

One flower to a stem, corona (“trumpet”) as long as or longer than the perianth segments (“petals”).

DIVISION 2 - LARGE-CUPPED DAFFODIL CULTIVARS

One flower to a stem, corona (“cup”) more than one-third, but less than equal to the length of the perianth segments (“petals”).

DIVISION 3 - SMALL-CUPPED DAFFODIL CULTIVARS

One flower to a stem, corona (“cup”) not more than one-third the length of the perianth segments (“petals”).

DIVISION 4 - DOUBLE DAFFODIL CULTIVARS

One or more flowers to a stem, with doubling of the perianth segments or the corona or both.

DIVISION 5 - TRIANDRUS DAFFODIL CULTIVARS

Characteristics of *N. triandrus* clearly evident; usually two or more pendent flowers to a stem; perianth segments reflexed.

DIVISION 6 - CYCLAMINEUS DAFFODIL CULTIVARS

Characteristics of *N. cyclamineus* clearly evident; one flower to a stem, perianth segments significantly reflexed; flower at an acute angle to the stem with a very short pedicel (“neck”).

DIVISION 7 - JONQUILLA AND APODANTHUS CULTIVARS

Characteristics of Sections Jonquilla or Apodanthi clearly evident; one to five (rarely eight) flowers to a stem; perianth segments spreading or reflexed; corona cup-shaped, funnel-shaped, or flared, usually wider than long; flowers usually fragrant.

DIVISION 8 - TAZETTA DAFFODIL CULTIVARS

Characteristics of Section Tazettae clearly evident; usually three to twenty flowers to a stout stem; perianth segments spreading, not reflexed; flowers usually fragrant.

DIVISION 9 - POETICUS DAFFODIL CULTIVARS

Characteristics of the *N. poeticus* group; usually one flower to a stem; perianth segments pure white; corona very short or disc-shaped, usually with a green and/or yellow center and a red rim, but sometimes of a single color; flowers usually fragrant.

DIVISION 10 - BULBOCODIUM DAFFODIL CULTIVARS

Characteristics of Section Bulbocodium clearly evident; usually one flower to a stem; perianth segments insignificant compared with the dominant corona; anthers dorsifixed (i.e. attached more or less centrally to the filament); filament and style usually curved.

DIVISION 11 - SPLIT-CORONA DAFFODIL CULTIVARS

Corona split - usually for more than half its length.

- a) Collar Daffodils. Split-corona daffodils with the corona segments opposite the perianth segments; the corona segments usually in two whorls of three.
- b) Papillon Daffodils. Split-corona daffodils with the corona segments alternate to the perianth segments; the corona segments usually in a single whorl of six.

DIVISION 12 - OTHER DAFFODIL CULTIVARS

Daffodil cultivars which do not fit the definition of any other division.

DIVISION 13 - DAFFODILS DISTINGUISHED SOLELY BY BOTANICAL NAME

Join the American Daffodil Society, Inc.

Exhibitors are especially encouraged to join the American Daffodil Society. The ADS publishes a quarterly journal containing interesting articles, color photos, and national daffodil news. To join, go to www.daffodilusa.org and click on the webstore; or mail \$35 for a family membership (or \$30 for an individual membership) to Executive Director, Edie Godfrey. Check out ADS: searchable picture gallery of daffodils on the web, click on [daffseek](#), [dafflibrary](#), or [dafftube](#).

For further information, contact
Edie Godfrey
ADS Executive Director
21498 Crahan Lane
Belle Plaine, MN 56011
E-mail: godfreyef@gmail.com

New Local Awards! sponsored by DHSWP, consisting of a club bulb sale gift certificate for winners of the following categories:

1. Design Section (Section O) - by popular vote
2. Wells Knierim Ribbon - Photography (Section Q) - by popular vote
3. Amateur, or The Deer Ate My Name Tags! (Section N)
4. Collection Novice Award (Sections I or J)
5. Small Grower Ribbon (Section F)
6. Best Container Grown Daffodil (Section K)
7. Best Seedling By Originator
8. Best Classic Daffodil (Section P)

**SCALE OF POINTS FOR JUDGING STANDARD,
SPECIES, AND HISTORIC DAFFODILS**

ADS Point Scale for Judging Cut Specimens			
	Standard & Miniature Cultivar	Species	Historic
Condition	20	50	40
Form*	25	15	15
Substance and Texture	15	10 (substance) 5 (texture)	5 5
Color	15	10	15
Pose	15	5	5
Stem		5	5
Size	10	0	10
TOTAL	100	100	100

*When judging miniature daffodils, substitute form and grace for form. Judges may deduct up to five points for lack of uniformity in judging vases/sets of three stems of daffodils of one cultivar or species. Winners of the Historic single-stem, three-stem, and collection of five are eligible for Gold, White, and Purple Ribbons and are to be judged on Cultivar Scale.

SCALE OF POINTS FOR JUDGING CONTAINER-GROWN DAFFODILS

Exhibit as a Whole	35
Symmetry with uniform development of each plant.....	20
Floriferousness.....	10
Condition and correctness of container and label.....	5
Bloom	55
Condition.....	10
Form – typical of the cultivar.....	10
Color.....	10
Substance and texture.....	10
Pose.....	5
Size – typical of the cultivar.....	5
Stem.....	5
Foliage	10
Condition of foliage.....	5
Color of foliage.....	<u>5</u>
Total	100

HORTICULTURAL DIVISION

Section A - Single stem, standard daffodil

Section B - Three stems, one standard cultivar or species daffodil

Section C - Collection of five different standard cultivars and/or species, one stem each from a single division.

Section D - Single stem, miniature daffodil

Section E - Three stems, one miniature cultivar or species daffodil

Section F - Small growers Section - open to anyone growing 50 or fewer cultivars and/or species. All entries are single stems; standard (including intermediates) or miniature.

18. The Show Committee reserves the right to subdivide classes by cultivar or color code when there are three or more worthy exhibits of the same cultivar or color code and if a sufficient number of worthy exhibits is left in the class. Species may be subdivided by their botanical sections. All Section F classes and Historic classes 252 and 253 may be subdivided based on Standard versus Miniature.

The words "pink cup," etc., define classes where that color is solid, 2W-P, or present in two adjacent zones, 2W-GPP. The words "pink in cup," etc., are used for classes that include both solid and rimmed cups of the same color. "Colored" is any color other than white. A reverse bicolor has a predominately yellow perianth and a predominately white cup where predominately means the same color in at least two adjacent zones.

	A	B	C	D	E	F
DIVISION 1						
TRUMPET DAFFODIL CULTIVARS			157	170	183	196
Yellow perianth, yellow trumpet	1	79				
Colored perianth, orange/red trumpet	2	80				
Colored perianth, pink in trumpet	3	81				
Reverse bicolor	4	82				
White perianth, yellow/orange trumpet	5	83				
White perianth, pink in trumpet	6	84				
White perianth, white trumpet	7	85				
 DIVISION 2						
LARGE-CUPPED DAFFODIL CULTIVARS			158	171	184	197
Yellow perianth, yellow cup	8	86				
Colored perianth, predominately orange/red cup	9	87				
Colored perianth, rimmed orange/red cup	10	88				
Colored perianth, pink in cup	11	89				
Reverse bicolor	12	90				
White perianth, yellow cup	13	91				
White perianth, yellow rimmed cup	14	92				
White perianth, orange or red cup	15	93				
White perianth, orange or red rimmed cup	16	94				
White perianth, pink cup	17	95				
White perianth, pink rimmed cup	18	96				
White perianth, white cup	19	97				

	A	B	C	D	E	F
DIVISION 3						
SMALL-CUPPED DAFFODIL CULTIVARS			159	172	185	198
Yellow perianth, yellow cup	20	98				
Colored perianth, predominately orange or red cup	21	99				
Colored perianth, orange or red rimmed cup	22	100				
Colored perianth. pink in cup	23	101				
Reverse bicolor	24	102				
White perianth, predominately yellow cup	25	103				
White perianth, yellow rimmed cup	26	104				
White perianth, orange or red cup	27	105				
White perianth, orange or red rimmed cup	28	106				
White perianth, pink in cup	29	107				
White perianth, white cup	30	108				
DIVISION 4						
DOUBLE DAFFODIL CULTIVARS			160	173	186	199
One bloom to a stem						
Yellow perianth, petaloids yellow	31	109				
Colored perianth, petaloids orange/red	32	110				
Colored perianth, petaloids pink	33	111				
White perianth, petaloids yellow	34	112				
White perianth, petaloids orange/red	35	113				
White perianth, petaloids pink	36	114				
White perianth, petaloids white	37	115				
More than one bloom to a stem						
Yellow perianth, petaloids yellow	38	116				
Yellow perianth, petaloids orange/red or pink	39	117				
White perianth, petaloids colored	40	118				
White perianth, petaloids white	41	119				
DIVISION 5						
TRIANDRUS DAFFODIL CULTIVARS			161	174	187	200
Yellow perianth, yellow cup	42	120				
Colored perianth, orange, pink or red cup	43	121				
Reverse bicolor	44	122				
White perianth, yellow cup	45	123				
White perianth, orange or red cup	46	124				
White perianth, pink in cup	47	125				
White perianth, white cup	48	126				

	A	B	C	D	E	F
DIVISION 6						
CYCLAMINEUS DAFFODIL CULTIVARS						
			162	175	188	201
Yellow perianth, yellow cup	49	127				
Colored perianth, orange, pink or red cup	50	128				
Reverse bicolor	51	129				
White perianth, yellow cup	52	130				
White perianth, orange or red cup	53	131				
White perianth, pink in cup	54	132				
White perianth, white cup	55	133				
 DIVISION 7						
JONQUILLA & APODANTHUS						
DAFFODIL CULTIVARS						
			163	176	189	202
Yellow perianth, yellow cup	56	134				
Colored perianth, orange or red cup	57	135				
Colored perianth, pink cup	58	136				
Reverse bicolor	59	137				
White perianth, yellow, orange, or red cup	60	138				
White perianth, pink in cup	61	139				
White perianth, white cup	62	140				
 DIVISION 8						
TAZETTA DAFFODIL CULTIVARS						
			164	177	190	203
Colored perianth, yellow, orange, pink or red cup	63	141				
White perianth, yellow cup	64	142				
White perianth, orange, red, or pink cup	65	143				
White perianth, white cup	66	144				
 DIVISION 9						
POETICUS DAFFODIL CULTIVARS						
			165	178	191	204
White perianth, eye green	67	145				
White perianth, eye any other color	68	146				
 DIVISION 10						
BULBOCODIUM DAFFODIL CULTIVARS						
	69	147	166	179	192	205
 DIVISION 11						
SPLIT-CORONA DAFFODIL CULTIVARS						
			167	180	193	206
One bloom per stem						
Colored perianth, colored cup	70	148				
White perianth, yellow/orange or red cup	71	149				
White perianth, pink in cup	72	150				
White perianth, white cup	73	151				

	A	B	C	D	E	F
More than one bloom per stem						
Any cultivar	74	152				

DIVISION 12

OTHER DAFFODIL CULTIVARS

			168	181	194	207
Any cultivar, one bloom per stem	75	153				
Any cultivar, more than one bloom per stem	76	154				

DIVISION 13

DAFFODILS DISTINGUISHED SOLELY BY BOTANICAL NAME

			169	182	195	208
Any species, one bloom per stem	77	155				
Any species, more than one bloom per stem	78	156				

SECTION G - INTERMEDIATE CLASSES

Class 209	One intermediate stem, Division 1					209B
Class 210	One intermediate stem, Division 2					210B
Class 211	One intermediate stem, Division 3					211B
Class 212	One intermediate stem, Division 4					212B
Class 213	One intermediate stem, Division 11					213B
Class 215	Three intermediate stems of one cultivar, Division 1					215B
Class 216	Three intermediate stems of one cultivar, Division 2					216B
Class 217	Three intermediate stems of one cultivar, Division 3					217B
Class 218	Three intermediate stems of one cultivar, Division 4					218B
Class 219	Three intermediate stems of one cultivar, Division 11					219B
Five different intermediate cultivars (Place with standard collections in class 235.)						

SECTION H - YOUTH DIVISION Exhibitors 18 years or younger. Youth exhibitors are not restricted to this section; they may elect to enter other sections for which they qualify.

Class 221	One stem any intermediate daffodil					
Class 222	One standard stem, Division 1 or 2					
Class 223	One standard stem, Division 3					
Class 224	One standard stem, Division 4, 5, or 6					
Class 225	One standard stem, Division 7, 8 or 9					
Class 226	One standard stem, Division 10, 11, 12 or 13					
Class 227	Three standard stems of one cultivar or species, any division. This class is eligible for the ADS White Ribbon.					
Class 228	One stem any miniature daffodil					
Class 229	Three stems of one miniature daffodil, any division. This class is eligible for the ADS Miniature White Ribbon.					
Class 230	Collection of 5 different standard cultivars. Eligible for ADS Purple Ribbon.					
Class 231	Collection of 5 different miniature cultivars or species. This class is eligible for the ADS Lavender Ribbon.					

SECTION I - STANDARD DAFFODIL COLLECTIONS One stem each of standard cultivars or species from any division(s) individually labeled. Please include full color code.

- Class 232 Pink cupped daffodils, 5 cultivars.
- Class 233 White daffodils, 5 cultivars.
- Class 234 Red and/or orange cupped daffodils, 5 cultivars.
- Class 235 Intermediate sized daffodils from RHS Division 1, 2, 3, 4 or 11, 5 single floreted cultivars. Bloom is normally between 1.5 and 3 inches in diameter.
- Class 236 Daffodils of American breeding, 5 cultivars. See rule #9. This class is eligible for the ADS Red-White-Blue Ribbon.
- Class 237 Reverse bicolor, 5 cultivars. This class is eligible for the ADS Maroon Ribbon.
- Class 265 Other collection of five daffodils from same country (Ireland, England, New Zealand, Australia).
- Class 238 Twelve cultivars and/or species from not less than 4 divisions. This class is eligible for the ADS Marie Bozievich Ribbon.
- Class 239 Fifteen cultivars and/or species from fifteen different RHS classifications. COLOR CODE IS REQUIRED. This class is eligible for the ADS Throckmorton Ribbon.
- Class 240 Twenty-four cultivars and/or species from at least five RHS divisions. This class is open to ADS members only. This class is eligible for the ADS Quinn Ribbon. First time winners may receive the Silver Quinn Medal. Former winners receive the Quinn Ribbon.
- Class 241 Twelve cultivars from at least three different RHS divisions 5 through 10. This class eligible for the ADS Havens ribbon.

SECTION J - MINIATURE DAFFODIL COLLECTIONS Please include full color code

- Class 242 Five cultivars or seedlings, one stem each (no species). This class is eligible for the ADS Lavender Ribbon.
- Class 243 Five cultivars, seedlings, or species, one stem each. This class is eligible for the ADS Lavender Ribbon.
- Class 244 Five cultivars or seedlings of American breeding, one stem each. See Rule #9. This class is eligible for the ADS Miniature Red-White-Blue Ribbon, and Lavender Ribbon.
- Class 245 Twelve cultivars and/or species of miniature daffodils from at least three RHS divisions. This class is open to ADS members only. This class is eligible for the ADS Watrous Ribbon. First time winners may receive the Silver Watrous Medal. Former winners receive the Watrous Ribbon.

SECTION K - CONTAINER-GROWN DAFFODILS Blooms are to be grown in and exhibited in a container or pot,. All bulbs in any one container shall be of the same cultivar or species. Container-grown daffodils may be grown in protected areas. No bloom or exhibit in this section shall be eligible for any ADS award other than the ADS awards for container-grown daffodils. Rule #18 is extended to permit subdividing classes by daffodil division.

- Class 247 Standard daffodils - named cultivars or seedlings, no species.
- Class 248 Miniature daffodils - named cultivars or seedlings, no species.
- Class 249 Species and species hybrid daffodils. Both standard and miniatures are permitted.

SECTION L - HISTORIC DAFFODILS

Historic Ribbon – This section is open to all cultivars (i.e., not species) introduced or in gardens before 1940. All cultivars shall be labeled with name, division number, and year of registration or introduction. [The earliest date shown in the International and Classified List 2008 and its supplements will be the authority.] Rule #18 is extended to permit subdividing Classes 250 and 251 by daffodil division or registration date.

Miniature daffodils registered before 1940 but removed from the ADS Miniature List shall be eligible for entry in the Historic Section class(es) for miniatures - and ONLY in the Historic Section. They are eligible for all Historic Awards.

- Class 250 Single stem of standard historic cultivar.
- Class 251 Single stem of miniature historic cultivar.
- Class 252 Collection of 5 different standard or 5 different miniature historic cultivars.
- Class 253 Three standard or miniature stems of one historic cultivar.

SECTION M - CLUB DAFFODILS

- Class 254 This class is open only to **The Daffodil and Hosta Society of Western Pennsylvania** members. One single stem is to be exhibited in each class.
 - 254 A. ‘Pittsburgh Someplace Special’
 - 254 B. ‘Sun Disc’
 - 254 C. ‘Bell Song’

SECTION N - AMATEUR, OR THE DEER ATE MY NAME TAGS! SECTION

The daffodils may be entered without a name if one is not known.

- Class 255A One single stem of a standard daffodil.
- Class 255B Three stems of one standard daffodil.
- Class 257A One single stem of a miniature daffodil.
- Class 257B Three stems of one miniature daffodil.

SECTION O - DESIGN SECTION

“Springtime Fun!!!”

- Class 258 A small design, using small or miniature daffodils. Design must not be over 8 inches in any direction.
- Class 259 Large design using daffodils. Height unlimited, maximum size twenty inches in width and depth.

DESIGN RULES

1. Designs must adhere to the General Rules (on page 1) for times that entries may be made. No daffodil foliage permitted.
2. Anyone may enter these classes.
3. Artistic entries must be arranged by the exhibitor. All entries must be accompanied by an entry card, correctly filled out. To reserve space for your entry or entries, please call Bonnie Plato, 412-726-7865.
4. An exhibitor may make only one entry in each class.
5. All designs must include some daffodils (two or more flowers). Exhibitors do not have to grow the plant material used in their designs.

6. Fresh plant material may not be treated in any manner. Some dried material is permitted. However, the following are not permitted: artificial plant material, fresh cut fruit and/or vegetables, or any plant material on the state list of endangered plant material.
7. Plant material must be listed on an entry card or 3 x 5 card and placed with the exhibit.
8. All designs must be maintained in show condition.
9. Committee will exercise care but will not be responsible for loss or damage of exhibitor's property. Please mark your property with your name. It is the responsibility of the exhibitor to remove all material at the close of the show, after 3:00 p.m., Saturday, April 29, 2017 at the Shady Side Academy Senior School Ice Rink.
10. This section will be scored by a popular ballot by 2:30 P.M. Saturday.

SECTION P - CLASSIC DAFFODILS This section is open to all standard cultivars introduced from 1940 to 1969 inclusive. All cultivars shall be labeled with name, division number, and year of registration (or introduction). The date shown in the International Daffodil Register and Classified List 2008 and its supplements will be the authority. The Show Committee and Chairman reserve the right to subdivide classes by decade and/or division, regardless of the number or quality of exhibits in each subdivision prior to judging. Daffodils in this Section will be judged using the cultivar scale, and are eligible for the Gold, White, and Purple Ribbons.

- Class 260 One stem, any division, with colored perianth.
- Class 261 One stem, any division, with white perianth.
- Class 262 Three stems of one cultivar, any division, with colored perianth.
- Class 263 Three stems of one cultivar, any division, with white perianth.
- Class 264 Collection of 5 different cultivars.

SECTION Q - PHOTOGRAPHY

The DHSWP Photography Division celebrates the daffodil. Photographers are encouraged to compose their entries according to accepted principles of two-dimensional design.

1. All entries must be the work of the exhibitor and must contain images of one or more daffodils as required by the class. Entries must not have won a First Place award in any class in a previous Daffodil show.
2. Classes are open to color or monochrome photographs and will be subdivided if needed. An exhibitor may make up to two entries in each class, up to 8 photographs in maximum.
3. Photographs should have a single mat or be mounted on light-weight neutral, stiff card stock or foam board. Minimum print size is 5x7 inches (13x18 cm), and maximum mounted size is 14x17 inches (36x43 cm). No glass or frame may be used. The photographer's name and address should be shown on the back of the mounting.
4. An entry card must be attached to each exhibit so that it is visible (folded to hide exhibitor's name), but not obscuring the image. On the face of the card, record the class and the title of the photo (if any). For an entry in class Q3, indicate on the entry card the location where the photograph was taken. The face of the entry card (below the fold) should have the name of the photographer. **Entry cards will be available at the show** or prior to the show – see #7.

5. If warranted by the quality or quantity of entries, classes may be further subdivided. First, Second, Third, and Honorable Mention awards will be given as merited in each subdivision. *Judging by popular vote of the show attendees - through 2:30 PM Saturday, April 29, 2017.*
6. The DHSWP will exercise caution in safeguarding exhibits, but cannot assume responsibility for lost or damaged photographs.
7. Exhibitors may send entries by mail to the Show Chair (e-mail sjplato46@gmail.com). Alternatively, exhibitors may bring their entries to the show. For further information, contact the show committee.
8. Exhibitors who mail their entries AND who will not be at the show should make prior arrangements with the Show Chair for the return of their entries. All other entries should be retrieved by their exhibitor (or designated alternate) at the close of the show. Those not picked up, or without pickup arrangements, will become the property of the Daffodil and Hosta Society of Western Pennsylvania and may be disposed of or may be used in future displays and publications.
9. The photography winner receives the Wells Kierim Ribbon.

	Class
Portraits of Daffodils - a <u>close-up</u> of a single daffodil bloom or a small group of daffodil blooms.	Q1
Daffodils in the Landscape or Garden.	Q2
Daffodils in their Native or Natural Habitat.	Q3
Daffodils and People.	Q4
Daffodils and Animals.	Q5
An arranged still life incorporating daffodils.	Q6
Abstract or special effects incorporating daffodils or daffodil elements.	Q7

An invitation to join . . .

The Daffodil and Hosta Society of Western Pennsylvania

Daffodils

For springtime gardens, the daffodil is one of the best bulbs to plant. They can be planted almost anywhere (except extremely shady places, such as under evergreen trees and shrubs). Once planted in well-drained, good garden soil, daffodils can be left in the ground for four to six years or until they need to be divided. Daffodils are virtually deer and rabbit proof. There are thirteen divisions (or different kinds) of daffodils which range in size from miniature and small to large (five inch-size) flowers, come in an assortment of white, yellow, orange, red, pink and green colors, and can give you from eight to twelve weeks of bloom if you choose varieties that bloom very early (March) to very late (June) in the season. There are also fall blooming daffodils. One nice aspect of planting daffodils is that you can inter-plant them with other perennials, such as hostas, iris and daylilies, so that you can have color all season long in your garden, not just in the spring.

Hostas

A great plant for shady locations. Hostas can be grown as ground cover, in the border, as edging plants or specimens. They are grown mainly for their foliage, but they produce beautiful spikes of flowers. Flowers range in color from lilac blue to white. Hosta foliage is extremely variable in color, texture, shape, and size. They are strong growers and do well in any moist soil in part sun or full or part shade. They require little care and have few problems other than slugs and chewing insects that can disfigure the leaves. Most bloom mid-August to September. They are propagated by division and are hardy to USDA Zone 3.

Our society presently meets at the Northland Public Library, 300 Cumberland Road, in the North Hills, Pittsburgh, PA 15237. We hold meetings in February, March, April, September, October and November; a Daffodil Show in April; a Hosta Show in June and a picnic in July or August. Our group visits interesting gardens, has lectures and slide presentations, offers plant and bulb sales, as well as sponsoring the Daffodil Show and the Hosta Cut Leaf Show.

For further information contact C. Alicia Perez, Club President, pitvp@aol.com

For information on hostas, contact Megan Danik, mad.danik@gmail.com 724-612-7386

For information on daffodils, contact Stephen Plato, sjplato46@gmail.com 412-478-7865

DHSWP Facebook page: <https://www.facebook.com/DHSWP?ref=hl>

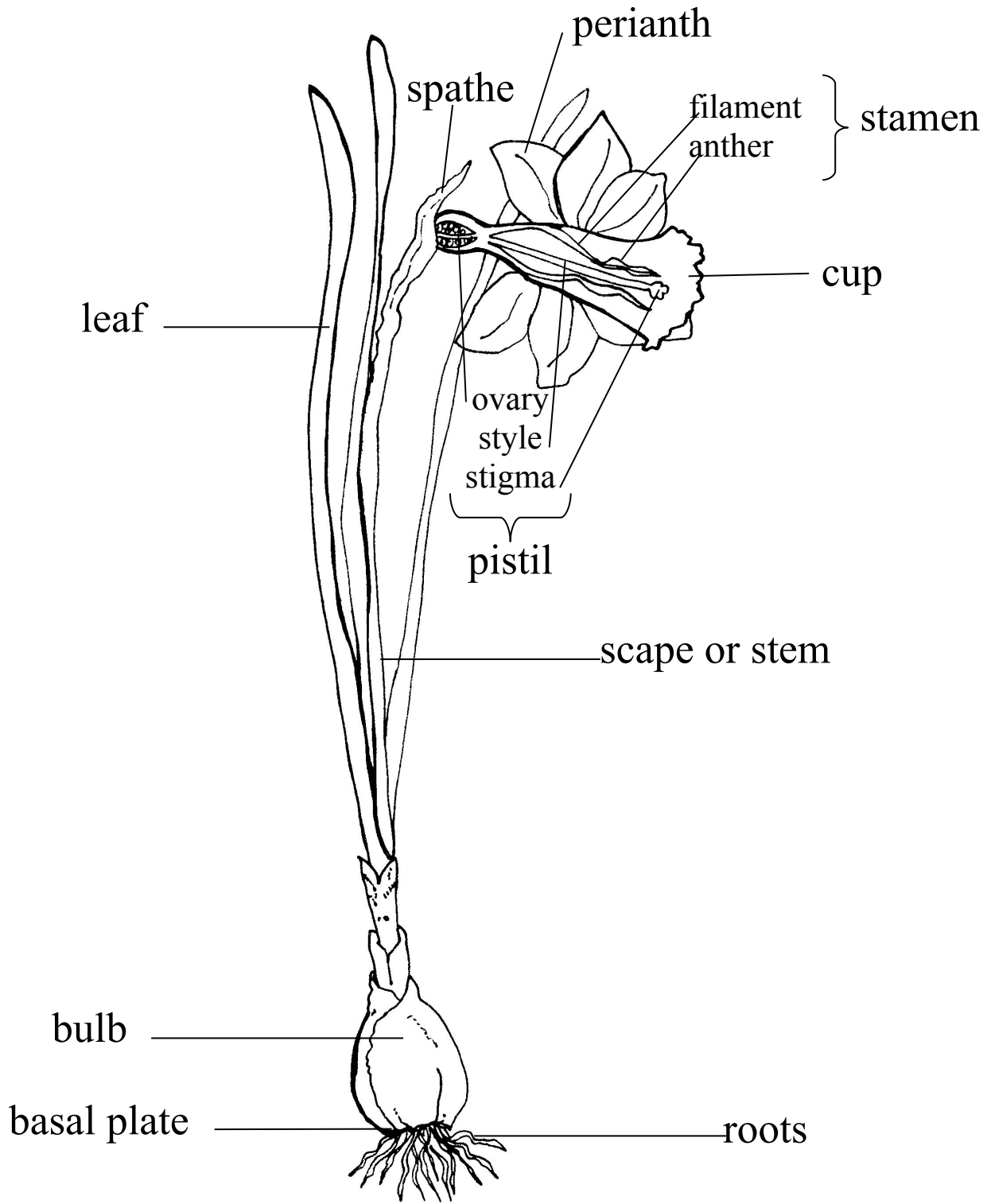
Members website: www.DHSWP.com

You are cordially invited to join our society by sending your name, address, phone number, e-mail, and dues to Bobbi Diller, 644 North Pike, Cabot, PA 16023, jsmsam@hotmail.com 724-355-3229. New membership in DHSWP is free (!) for the first year when you join in August or later with a paid membership. A two-year membership is \$10. A three-year membership is \$15. A new membership packet (including event calendar, newsletter, a copy of the ADS Journal and the AHS Journal) is included with each paid membership. Make checks payable to DHSWP.

It's a warm wind, and the west wind, full of birds' cries;
I never hear the west wind but tears are in my eyes,
For it comes from the west lands, the old brown hills,
And April's in the west wind, and daffodils.

From "The West Wind" by John Masefield (1878-1967)

Parts of the Daffodil



Parts of a Daffodil Plant

root – absorbs water and minerals from the soil

bulb – stores food

leaf – makes food for the plant

stem – holds up the flower and carries water and food throughout the plant

flower – contains the parts of the plant that can produce more seed to make a new plant

Parts of a Daffodil Flower

cup – trumpet shaped inner growth of the flower

perianth – six floral segments around the cup

stamen – six male parts of the plant

- anther – produces and releases pollen
- filament – holds up the anther

pistil – female part of the plant

- stigma – receives pollen
- style – supports the stigma and connects it to the ovary
- ovary – protects eggs which can become seeds if fertilized by pollen

